

From planning to (almost) production: Research Data York

JENNY MITCHAM, DIGITAL ARCHIVIST,
UNIVERSITY OF YORK

From Planning to Deployment: Digital Preservation and Organizational Change
DPC/Jisc Briefing Day - 26th June 2017

A high-angle, close-up photograph of a red running track. The track is divided into six lanes by white lines. The lanes are numbered 1 through 6 in white, with the numbers increasing from the top towards the bottom. The perspective is from the top of the track, looking down the length of the lanes. The track surface is a reddish-brown color with a fine, pebbled texture. The white lane lines are clearly visible, and the numbers are large and bold. The overall composition is simple and focused on the track's layout.

Where to start?

..and where to end?

Phase 1
(Mar-Jun 2015)

looked at the rationale for research data management and the use of *Archivematica*



Phase 2
(July-Nov 2015)

worked with Artefactual to improve how *Archivematica* worked with research data



Phase 3
(Mar-Aug 2016)

install *Archivematica* and continue to investigate the file formats problem

Investigating *Archivematica* to preserve **research data** for the longer term ...because **digital preservation** won't just go away

- considering similarities/differences with born-digital archives
- liaising with other Research Data Spring projects and with existing *Archivematica* users
- looking at how institutions can automate the process of reporting new file types to Pronom
- sharing ideas and development for the benefit of the entire community
- engagement via conferences, project blog, *UK Archivematica User Group*

Jisc

Filling the Digital Preservation Gap

A Jisc Research data spring project

Jen Mitcham & Julie Allinson (York) and Chris Awre, Richard Green & Simon Wilson (Hull)



UNIVERSITY *of York*

UNIVERSITY OF **Hull**

artefactual

Phase 1: thinking about workflows

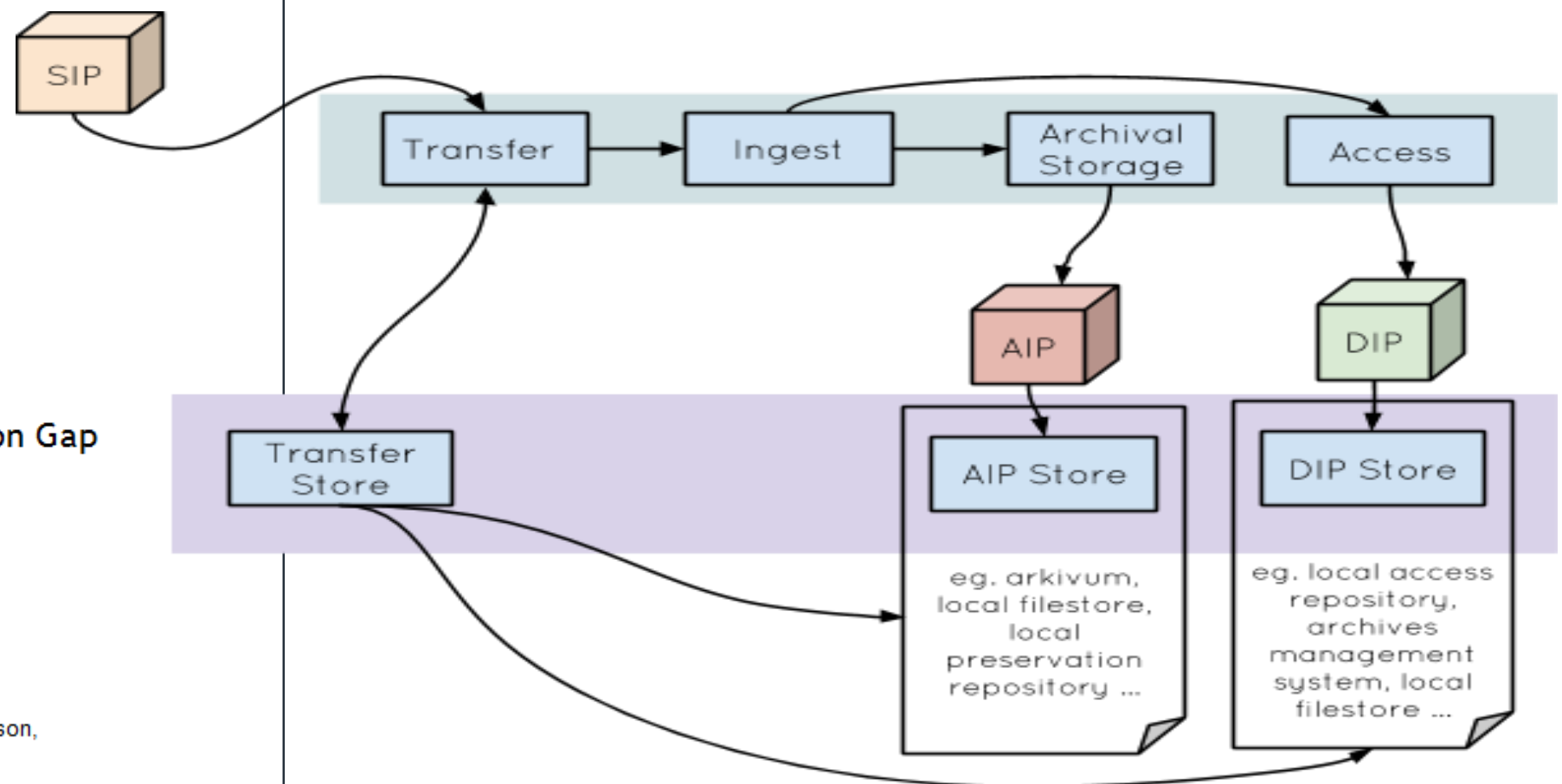
UNIVERSITY *of* York
UNIVERSITY OF Hull

Filling the Digital Preservation Gap

A Jisc Research Data Spring project

Phase One report - July 2015

Jenny Mitcham, Chris Awre, Julie Allinson,
Richard Green, Simon Wilson



Phase 2: the implementation plan

UNIVERSITY of York

UNIVERSITY OF Hull

- 43 -

Appendix 2 : Implementation Plan for Archivematica and RDMonitor at York

Julie Allinson and Jen Mitcham, December 2015
University of York

[Implementation Plan for Archivematica and RDMonitor](#)
[Workflows](#)

[Deposit and Preservation Workflow](#)

[Before the transfer to Archivematica](#)

[Transfer to Archivematica for storage](#)

[After the transfer to Archivematica](#)

[Discovery and Access Workflow](#)

[Data Access DIP Creation Workflow](#)

[Management, reporting and administration](#)

[Requirements and Specification](#)

[RDMonitor](#)

[Data Uploader](#)

[SIP Processor](#)

[Archivematica Transfer \(Submission\)](#)

[DIP Processor](#)

[Dissemination Information Packages](#)

[Data Model for Datasets and DIPs](#)

[Dataset](#)

[DIP](#)

[Project Scope](#)

[Workplan for Phase 3](#)

[Summary](#)

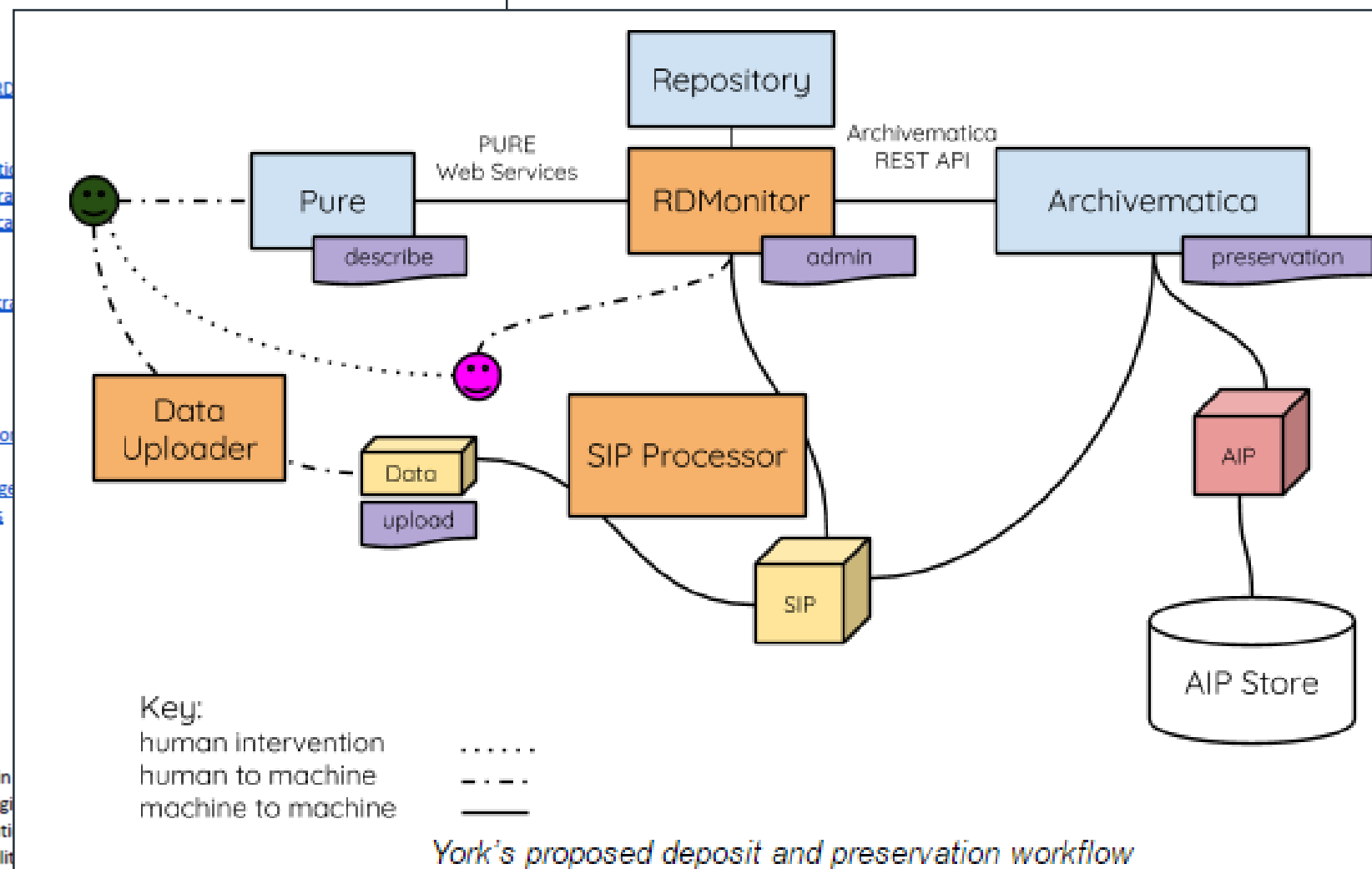
Filling the

Overview

This implementation plan is intended to be read in the final report for phase two of the Filling the Digital Gap project. It will provide some low-level detail on the implementation of phase two to help us test and validate the feasibility of the plan.

Workflows

What follows is a detailed description of how research data would be captured and processed within our proof of concept implementation:



Phase 3: the proof of concept

UNIVERSITY of York

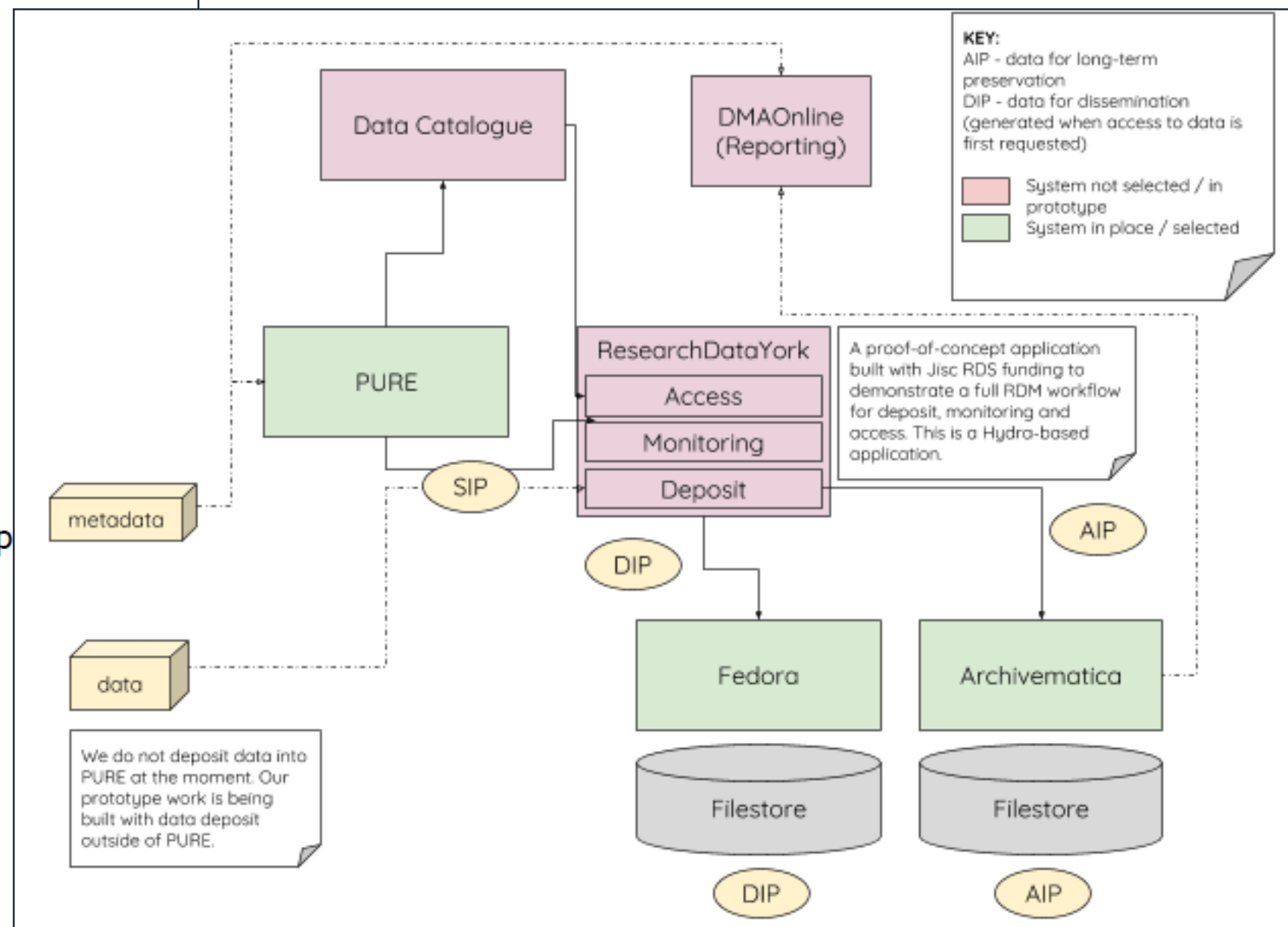
UNIVERSITY OF Hull

Filling the Digital Preservation Gap

A Jisc Research Data Spring project

Phase Three report - October 2016

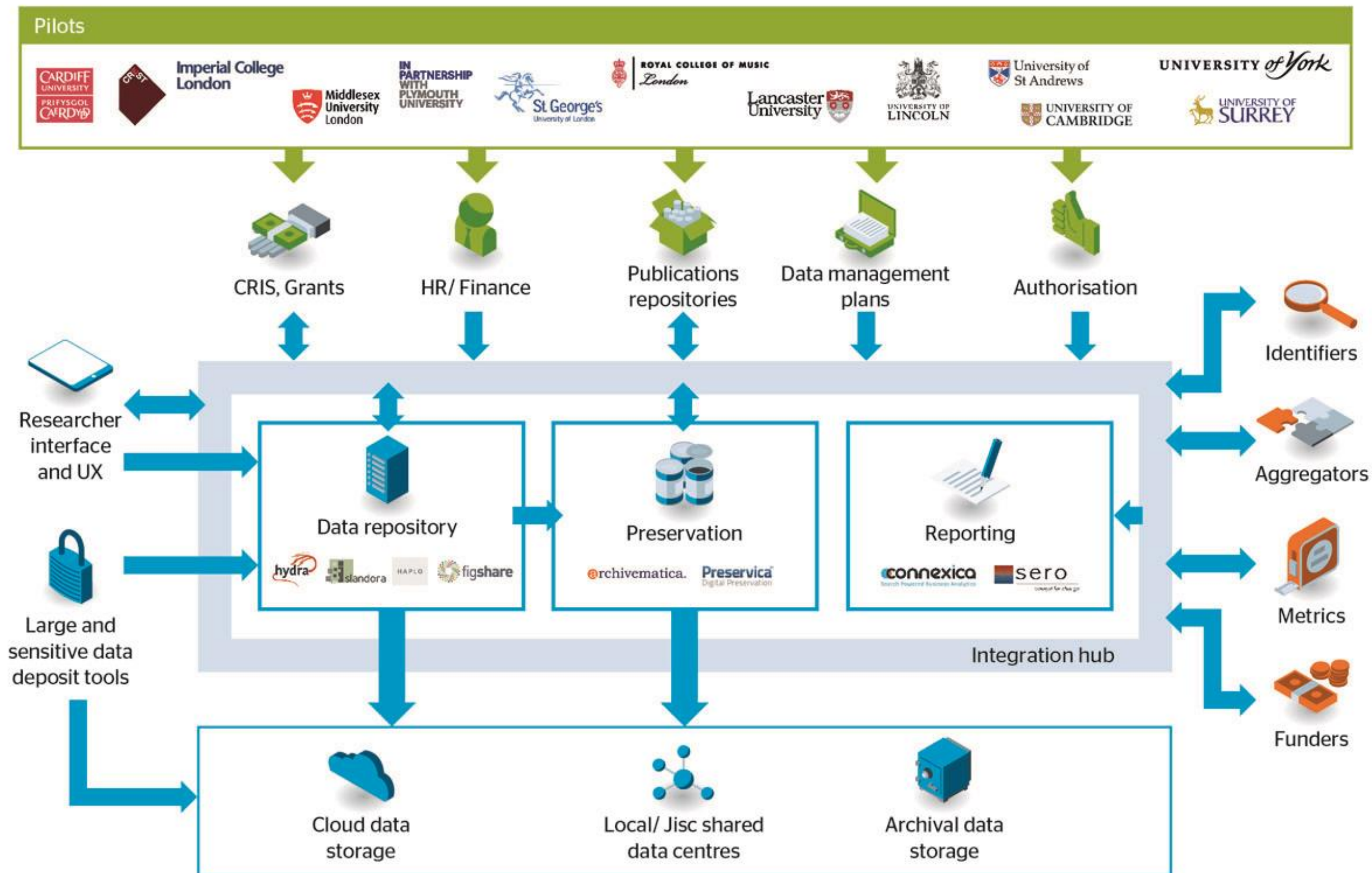
Jenny Mitcham, Chris Awre, Julie Allinson,
Richard Green, Simon Wilson



Where next?



...and what about the Jisc RDSS?



Challenges and barriers





Staff ...or lack of them

Timings





Dependencies

The real pain point

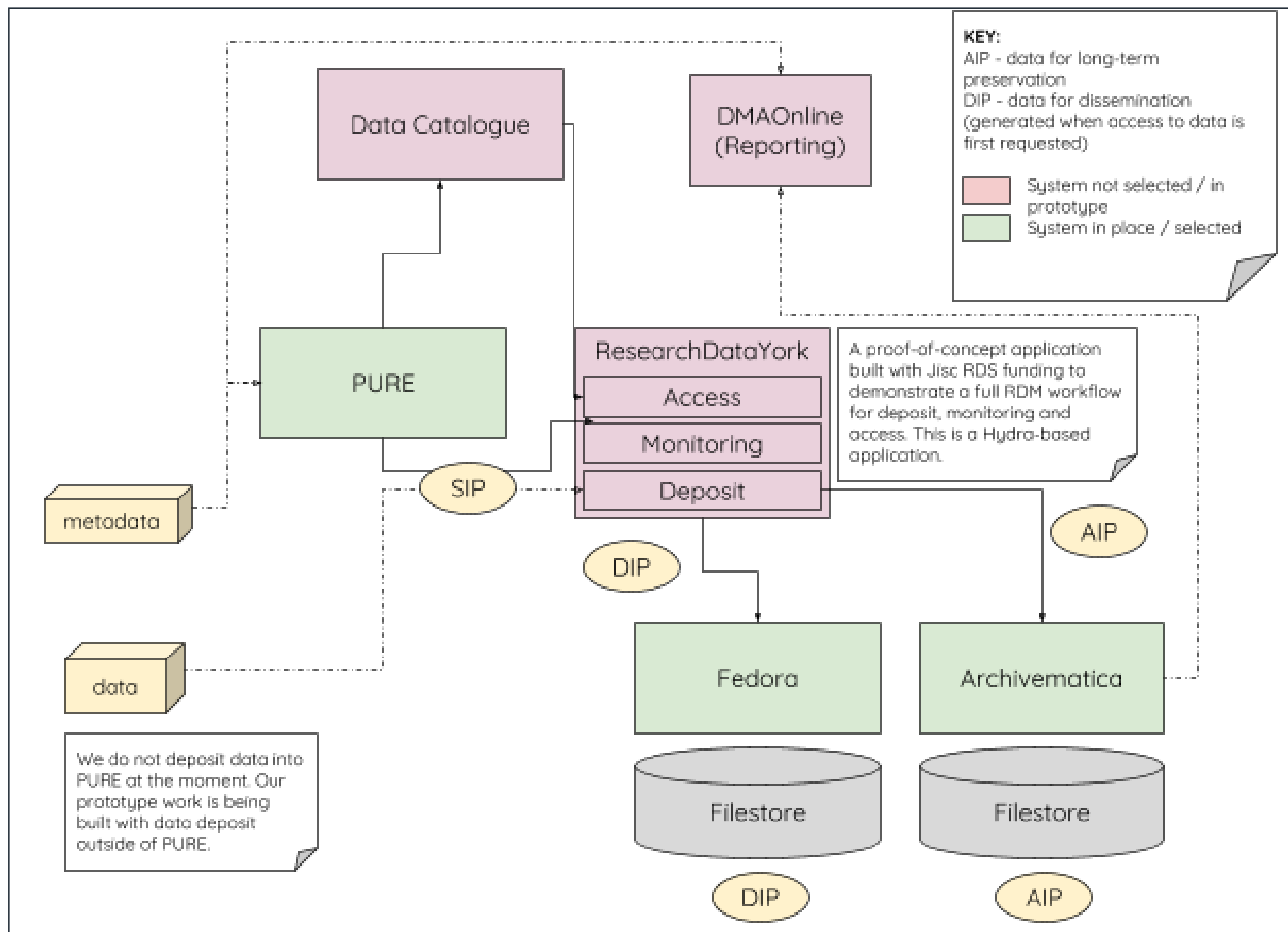




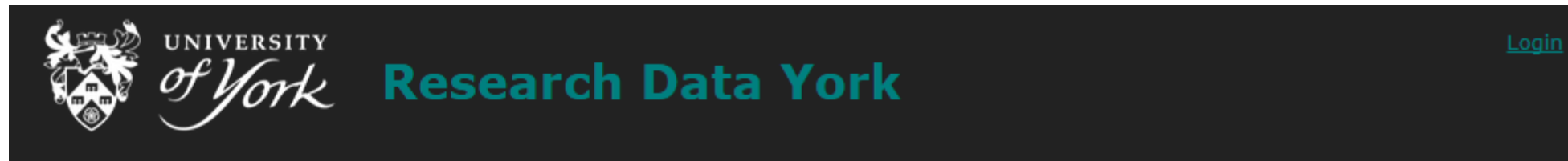
The shifting landscape



Managing expectations



Managing expectations



Research Data York

Welcome to Research Data York. Administrators should login via
If you are depositing data, you should have been provided with
If you are looking for datasets, please search the [Data Catalogue](#)
Please email [Library Research Support](#) if you need for further help

The banner includes the University of York crest, 'UNIVERSITY of York' text, and 'Research Data York' in teal. On the right, it shows the user 'jlm10@york.ac.uk [admin]' and a 'Log Out' link.

Search For

☐ New - Awaiting Action

☐ Researcher Contacted - Awaiting Info

☐ Researcher Contacted - Awaiting Data

☐ DOI Created

☐ DOI Not Yet Created

☐ PhD Student Deposit

☐ Data Externally Held

☐ Data Held By Dept

☐ Upload in Progress

☐ Data Uploaded

☐ Upload Problem

☐ Data Not Uploaded

☐ Metadata Held for Publication

☐ Data Held for Publication

☐ Data Available

☐ Waiting for Approval

☐ Request Approved, Data In Progress

☐ Data Not Available

Search

[Clear search](#)

Datasets

[Add a Dataset](#)

Listing 10 datasets (24 in total) Pages: [1](#) [2](#) [3](#)

Dataset	Access	Created (PURE)	Date Available	Status	AIP	DOI
PURE UUID: 20ee85c3-f53c-4ab6-8e50-270b0ddd3686 Title: Global temperature reconstructions version 2 (Cowtan and Way) Creator: Kevin Douglas Cowtan; Kevin Douglas Cowtan; Managing Org: Chemistry Chemistry DOI: ✓ http://dx.doi.org/10.15124/20ee85c3-f53c-4ab6-8e50-270b0ddd3686 Links: http://www-users.york.ac.uk/~kdc3/papers/coverage2013/series.html ; Deposit URL: http://researchdata.york.ac.uk/deposits/3484zg88m Request URL: http://researchdata.york.ac.uk/datasets/3484zg88m	Open	24/02/2016		<div><div>🟡 New Dataset</div><div>✅ DOI Created</div><div><input type="checkbox"/> Researcher Contacted - Awaiting Info</div><div><input type="checkbox"/> Data from PhD Student</div><div>DATA</div><div><input type="checkbox"/> Researcher Contacted - Awaiting Data</div><div><input type="checkbox"/> Data Externally Held</div><div><input type="checkbox"/> Data Held By Dept</div><div>ACCESS</div></div>	❌ Deposited	❌

Managing expectations



Research Data York

jlm10@york.ac.uk [admin]

[Log Out](#)

Global temperature reconstructions version 2 (Cowtan and Way)

PURE unique identifier: 20ee85c3-f53c-4ab6-8e50-270b0ddd3686

DOI: <http://dx.doi.org/10.15124/20ee85c3-f53c-4ab6-8e50-270b0ddd3686>

Creator: Kevin Douglas Cowtan

Managing Department: Chemistry

Date Available:

Publisher: University of York

Data Deposit

Readme

Please provide any information that would help others use the data, for example deployment instructions or required software.

This information will be stored alongside and made available with your data.

Select local files to deposit

[Choose Files](#) No file chosen

Select a local directory to deposit *Note: this option only works on certain browsers, including Chrome and Safari*

[Choose Directory](#) No directory chosen

Select google drive files to deposit

[Choose Files](#) No file chosen

[Deposit](#)

Managing expectations



Research Data York

jlm10@york.ac.uk [admin]

[Log Out](#)

Raw data for the paper 'Synthetic approaches to pallimamine and analogues using direct imine acylation'

PURE unique identifier: ade57976-50c9-4146-bb44-c65b5d2ca5f1

DOI: <http://dx.doi.org/10.15124/ade57976-50c9-4146-bb44-c65b5d2ca5f1>

Creator: William Paul Unsworth

Managing Department: Chemistry

Date Available:

Publisher: University of York

View Submission Documentation

[readme.txt](#)


Download the Data

As a zip file

[Download zip](#)

As individual files

 [Notes/HOA Portal notes.docx](#)

 [Notes/EARL notes.docx](#)

 [small1.xml](#)

 [BoxingBell.mp3](#)

 [kit1.jpg](#)

 [more/Snowy scene.jpg](#)

Where are we?

- * In test phase 1 – playing with Research Data York

Where are we going?

- * Another test phase planned
- * Production version should be ready end of Aug...

A close-up photograph of a weathered brick wall. The bricks are reddish-brown with some greenish-grey patches, possibly from moss or algae. The mortar is light-colored and shows signs of wear. A semi-transparent rectangular box is overlaid on the upper portion of the wall, containing the text "...If we can avoid further brick walls...".

**...If we can avoid
further brick walls...**



Light at the end of the tunnel



UNIVERSITY
of York

Questions?

Project website: <https://www.york.ac.uk/borthwick/projects/archivematica/>

Blog: <https://digital-archiving.blogspot.co.uk/>